

# SOLO ACCESSORIES

Create the holographic experiences you have always dreamed of with the custom range of HYPERVSN Solo Accessories. Designed to expand your installation opportunities and bring a new level of convenience and versatility to your set up. These accessories offer you everything from floor and ceiling mounts to multiple portable solutions, allowing you to plug-and-play with ease.



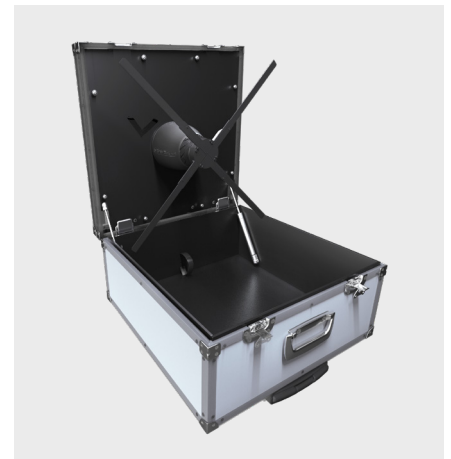
**HYPERVSN Ceiling Mount**



**HYPERVSN Triple Mount**



**HYPERVSN Tripod**



**HYPERVSN Demo Box**



**HYPERVSN Dome M**



**HYPERVSN Dome L**



**HYPERVSN Dome Ultra**



## HYPERVSN Dome M

Explore new installation opportunities with the HYPERVSN Dome M. This accessory safeguards Solo M (56 cm) devices in a protective transparent shield, allowing devices to be placed within reach of audiences.

### KEY BENEFITS:



Safer for installations within audience reach



Scratch and damage resistant



Crystal-clear viewing clarity



Can be fixed to a wall or attached to other HYPERVSN Solo Accessories

### TECHNICAL SPECIFICATIONS:

**Device compatibility:** HYPERVSN Solo M

**Accessory compatibility:** HYPERVSN Ceiling Mount and HYPERVSN Tripod

**Weight:** 4.3 kg / 8.8 lbs (w/o device)

**Diameter:** 73 cm / 28.7"

**Thickness:** 4 mm / 0.157"



## HYPERVSN Dome L

The transparent HYPERVSN Dome L adds a protective shield to the HYPERVSN Solo L (75 cm) device. This allows the Solo L to be used in new indoor environments, including within reach of audiences without supervision. The HYPERVSN Dome L has been designed not to compromise the 3D holographic effect of the device.

### KEY BENEFITS:



Safer for installations within audience reach



Scratch and damage resistant



Crystal-clear viewing clarity



Can be fixed to a wall or attached to other HYPERVSN Solo Accessories

### TECHNICAL SPECIFICATIONS:

**Device compatibility:** HYPERVSN Solo L

**Accessory compatibility:** HYPERVSN Ceiling Mount and HYPERVSN Tripod

**Weight:** 4.7 kg / 8.8 lbs (w/o device)

**Diameter:** 94.5 cm / 37"

**Thickness:** 4 mm / 0.157"



## HYPERVSN Dome Ultra

The HYPERVSN Dome Ultra is sleek, yet grand in design. It creates the impression of an enhanced 3D effect, and the visuals displayed within appear to be enlarged (to the human eye). This transparent shield only sits 30 cm off any installation Wall – making it fit easily into almost any interior space as a fixed installation.

### KEY BENEFITS:



Creates the impression of an enhanced 3D effect



Visuals displayed appear enlarged



Design protects devices while enhancing interior spaces

### TECHNICAL SPECIFICATIONS:

**Device compatibility:** HYPERVSN Solo L

**Weight:** 9 kg / 20 lbs (w/o device)

**Diameter:** 134.5 cm / 53"

**Thickness:** 3 mm / 0.118"



## HYPERVSN Glass Box

Robust and elegant, the protective HYPERVSN Glass Box fits the size of most retail shelves, but can also be used in bars, restaurants, offices and receptions to get the most impact out of your marketing. Transparent side walls, with dark top and bottom surfaces are the ideal display for shop-front tables, bar counters and any other flat horizontal surfaces you can work with. The transparent background enhances the 3D visual effects, while the flat front screen allows us to achieve minimal image distortion.

### KEY BENEFITS:



Flat screen with minimal image distortion



Increased brightness



Increased scratch resistance



Portable, lightweight and safe to handle

### TECHNICAL SPECIFICATIONS

**Device compatibility:** HYPERVSN Solo M

**Weight:** 22 kg / 48.5 lbs (w/o device)

**Dimensions:** 665 mm x 300 mm x 665 mm / 26.2" x 11.8" x 26.2"

**Materials** (non-combustible): tempered anti-glare glass (aka museum glass), sheet steel



## HYPERVSN Tripod

Elevate installations with the premium HYPERVSN Tripod, displaying content on a single Solo device at a height of 1.5 m – 2.2 m above the ground. When it comes to brand communication, eye-level is buy-level, so command instant attention with this ready-made display accessory. The perfect solution for vertically showcasing HYPERVSN Solo.

### KEY BENEFITS:



Quick installation  
and assembly



Wheels can easily  
be attached



Adjustable height  
(1.5 m-2.2 m)

### TECHNICAL SPECIFICATIONS:

**Device compatibility:** HYPERVSN Solo M and L

**Accessory compatibility:** HYPERVSN Dome M and L

**Weight:** 10 kg / 22 lbs (w/o device)

**Length:** 155 cm – 220 cm / 45.3” – 86.6” (w/o device)



## HYPERVSN Demo Box

The HYPERVSN Demo Box is the go-to accessory for HYPERVSN Solo displays on the move. This self-contained accessory delivers both excellent portability and effortless installation. Open the box, plug it in and get ready to amaze. A complete all-in-one demo solution that does not compromise the revolutionary HYPERVSN holographic effect.

### KEY BENEFITS:



Instant device display



Safe device transport and storage



Quick and easy pack up with telescopic handle and wheels



Manufactured from the highest quality materials

### TECHNICAL SPECIFICATIONS:

**Device compatibility:** HYPERVSN Solo M

**Weight:** 9 kg / 20 lbs (w/o device)

**Dimensions:** 49.5 cm x 49.5 cm x 24.5 cm / 19.5" x 19.5" x 9.6"



## HYPERVSN Ceiling Mount

Suspend one Solo device from the ceiling and create the perfect high-visibility solution for audiences. The HYPERVSN Ceiling Mount makes it easy to attach the device and allows users to adjust its height and angle of inclination. Redefine traditional installations by seizing the largest unoccupied activation area available – overhead space.

### KEY BENEFITS:



Increases device impact over distance



Adjustable height and device angle



No assembly or specific skills required

### TECHNICAL SPECIFICATIONS:

**Device compatibility:** HYPERVSN Solo M and L

**Accessory compatibility:** HYPERVSN Dome M and L

**Weight:** 5 kg / 11 lbs (w/o device)

**Length:** 65 cm – 115 cm / 25.6" – 45.3" (w/o devices)





## HYPERVSN Triple Mount

Aim even higher for device installations with the HYPERVSN Triple Mount. This multi-device ceiling mount allows for up to 3 Solo devices (M/L) to be suspended from one central point, providing a dynamic visual experience from every corner of the room. Each of the Triple Mount's device angles can also be adjusted, adding additional flexibility to installations.

### KEY BENEFITS:



Suspended multi-device display maximizes visibility



No safety barrier required for interaction



15-degree tilt angle for adjustable positioning

### TECHNICAL SPECIFICATIONS:

**Device compatibility:** HYPERVSN Solo M and L

**Weight:** 8 kg / 17.6 lbs (w/o devices)

**Length:** 45 cm – 55 cm / 17.7" – 21.6" (w/o devices)